

## INTRODUCTION

This brochure has been prepared to help Battle Creek Executive Airport operate in the quietest manner possible, while meeting federal regulations and safety considerations. The airport is implementing Voluntary Noise Abatement Measures in effort to reduce noise intrusion to the surrounding land uses and to be a good neighbor to the surrounding communities.

The Battle Creek Executive Airport Voluntary Noise Abatement Measures focus on pilot and community education, as well as on open dialogue with local neighbors. Compliance with the measures is requested unless deviations are made necessary by weather, ATCT instructions or clearances, an inflight emergency, or other safety considerations.

- The noise measures described in this brochure are not intended to preempt the responsibilities of the pilots for safe aircraft operations. Further, recommended procedures are not intended to conflict with instructions from ATC or the FAA.

Implementation of these Voluntary Noise Abatement Measures help reduce aircraft noise over neighboring areas. Complying with the measures helps maintain the characteristics of the City of Battle Creek that have made it a treasured place to live, work, and visit. Pilots are encouraged to “fly friendly” whenever possible and to always “fly safe!”

### **Battle Creek Executive Airport**

*15551 South Airport Road*

*Battle Creek, MI 49015*

*(269) 966-3470*

[www.FlyBTL.com](http://www.FlyBTL.com)



# Fly Safe!



FAR Part 150

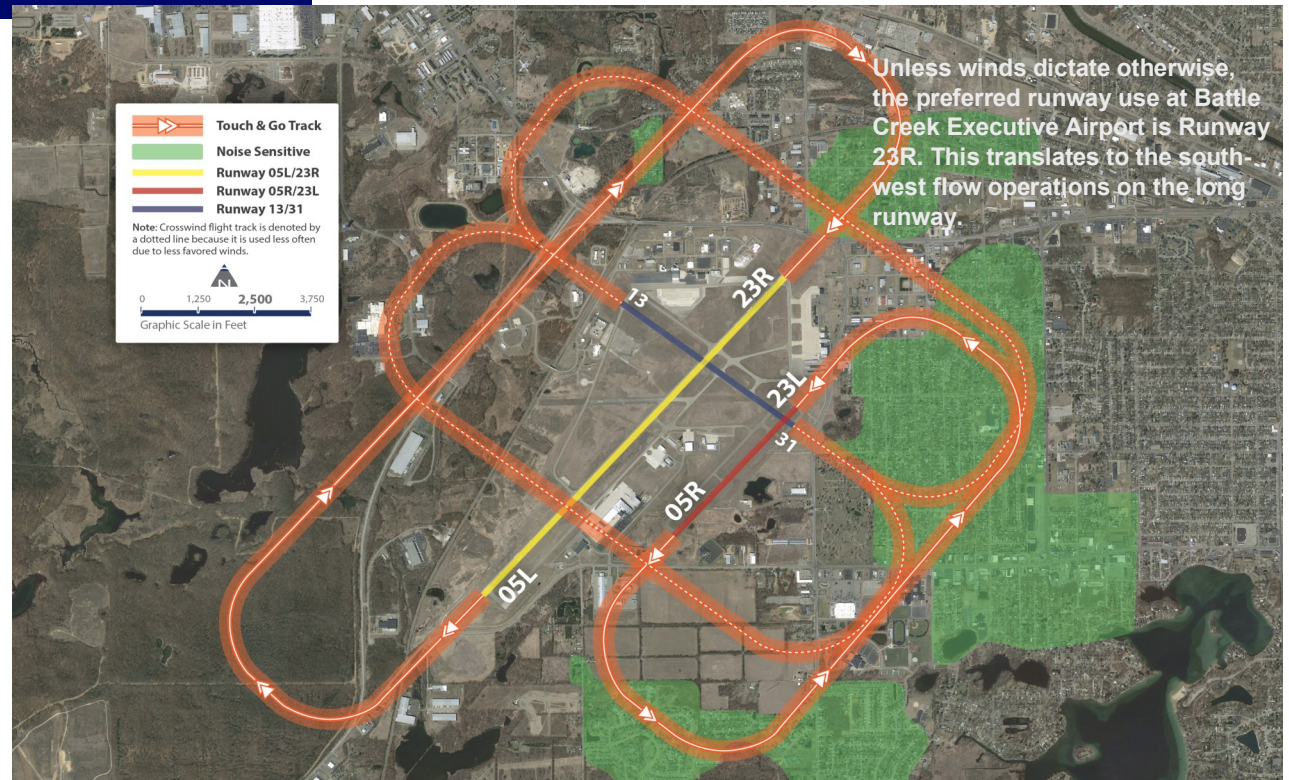
Noise Implementation

## Fly Quiet Brochure



# Voluntary Noise Abatement Measures

- Adhere to a 1,000' traffic pattern at the Battle Creek Executive Airport.
- Unless engine cooling dictates otherwise, utilize a maximum angle or maximum rate of climb speed for the first 1,000 feet of altitude to distance the aircraft from residual residential areas.
- When approaching to land, do their best to maintain an approach profile not below VAS I, PAPI or electronic glideslope (recommended glide path), is such is available.
- Avoid the use of the short parallel runway (Runway 05R and 23L) when the control tower is closed.
- Avoid conducting extended engine run-ups on the south portion of the WMU ramp area prior to 8:00 AM and after 5:00 PM on weekdays and all hours on Saturday and Sunday.
- When using the Northeast/Southwest runways, utilize the long parallel runway (05L/23R) to the greatest extent possible consistent with safety and operational needs.
- Unless an operational need exists, avoid using the short parallel runway (05R/23L) prior to 8:00 AM and after 8:00 PM.
- Duncan Aviation recommends all run-up of aircraft at the south end of the airport in the jet-designated run-up area between the hours of 8:00 AM to 10:00 PM Monday through Friday, and after 8:00 AM to 5:00 PM on Saturday and Sunday. After hours run-up times are kept to a minimum.



## In what other ways is Battle Creek Executive Airport addressing noise issues?

- Web-based Hotline and Land Line Call-in Number.
- Informational Posters at FBO and Tenant Facilities for Friendly Flying
- Pilot Information
- Formalized Program/Agreement between Users, Airport Traffic Control Tower and Battle Creek Executive Airport
- FAQs on Battle Creek Executive Airport Website



Scan Here for [www.flyBTL.com](http://www.flyBTL.com)

Noise Concern Hotline: 269-966-1665

